

Date	Description	Date Issued

# HUMPHRIES POLI ARCHITECTS

All reports, plans, specifications, computer files, field data, notes and other documents and instruments prepared by the Architect as instruments of service shall remain the property of the Architect. The Architect shall retain all common law, statutory and other reserved rights, including copyright thereto.

## LEVEL 1 FLOOR PLAN

DESIGN DEVELOPMENT -  
PROGRESS SET  
8 JUNE 2017

PROJECT NO.	PRINCIPAL IN CHARGE	PROJECT MANAGER	CHECKED BY
37009	DH	BH	--

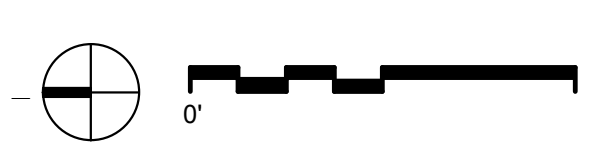
NOT FOR CONSTRUCTION

SHEET No.

**A-101**

GROSS SQUARE FOOTAGE	
BASEMENT	6,335 SF
1 <sup>ST</sup> FLOOR	29,595 SF
2 <sup>ND</sup> FLOOR	20,035 SF
<b>TOTAL</b>	<b>55,965 SF</b>

1 LEVEL 1  
1/8" = 1'-0"





Date	Description	Date Issued



All reports, plans, specifications, computer files, field data, notes and other documents and instruments prepared by the Architect as instruments of service shall remain the property of the Architect. The Architect shall retain all common law, statutory and other reserved rights, including copyright thereto.

**LEVEL 2 FLOOR PLAN**

DESIGN DEVELOPMENT - PROGRESS SET  
8 JUNE 2017

PROJECT No.	PRINCIPAL IN CHARGE	PROJECT MANAGER	CHECKED BY
37009	DH	BH	--

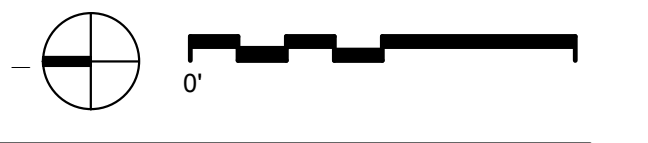
NOT FOR CONSTRUCTION

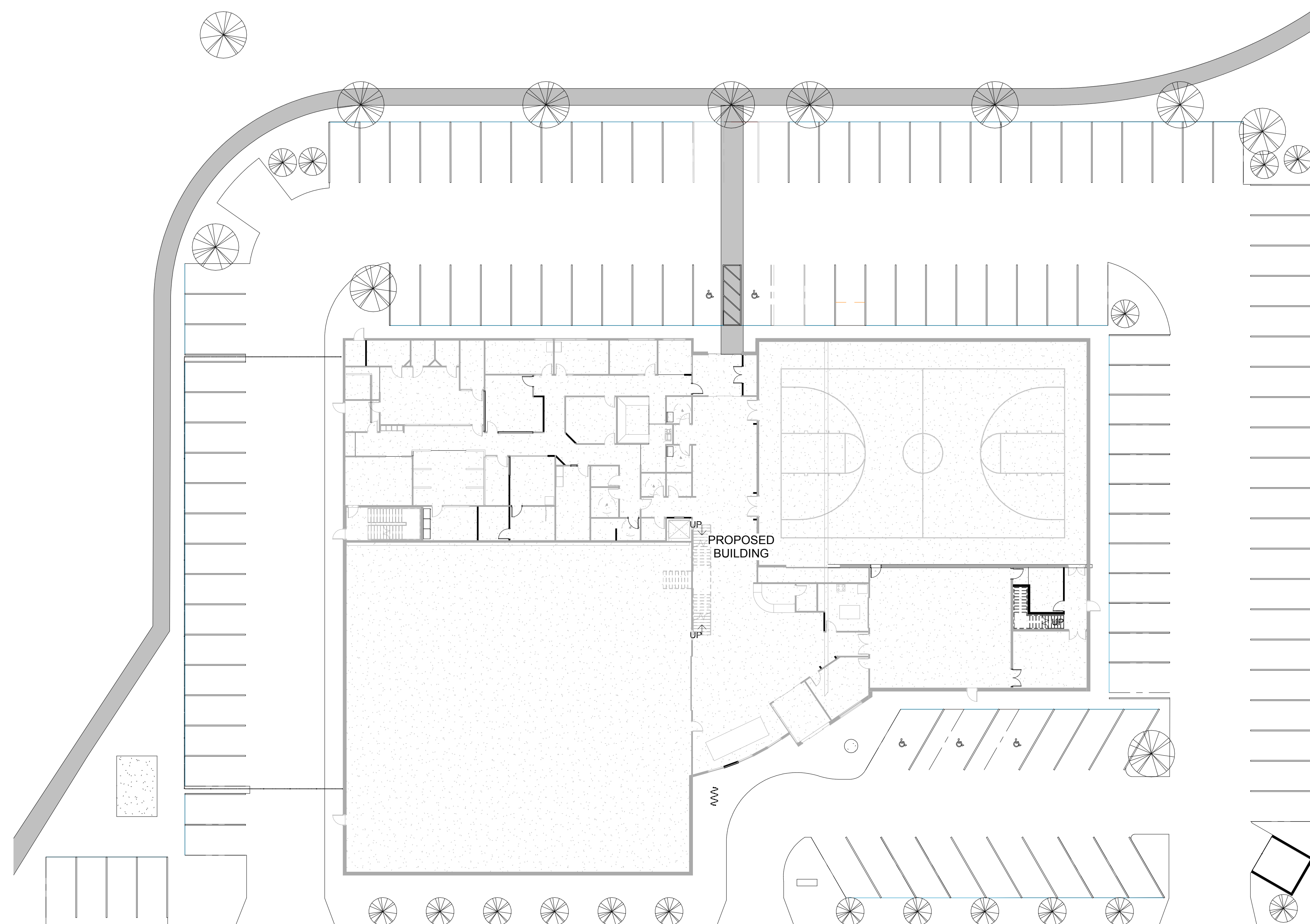
SHEET No.  
**A-102**

**GROSS SQUARE FOOTAGE**

BASEMENT	6,335 SF
1ST FLOOR	29,595 SF
2ND FLOOR	20,035 SF
<b>TOTAL</b>	<b>55,965 SF</b>

**1 LEVEL 2**  
1/8" = 1'-0"





Date	Description	Date Issued

**HUMPHRIES POLI ARCHITECTS**  
All reports, plans, specifications, computer files, field data, notes and other documents and instruments prepared by the Architect as instruments of service shall remain the property of the Architect. The Architect shall retain all common law, statutory and other reserved rights, including copyright thereto.

**SITE PLAN**

DESIGN DEVELOPMENT -  
 PROGRESS SET  
 8 JUNE 2017

PROJECT No.	PRINCIPAL IN CHARGE	PROJECT MANAGER	CHECKED BY
37009	DH	BH	-

NOT FOR CONSTRUCTION

SHEET No.  
**AS-101**

